



AAPS REIMAGINE LEARNING PLAN

2020-21

UPDATE

Presented to the Board of Education
July 29, 2020

AAPS REIMAGINE LEARNING PLAN 2020-21

Our work may look very different now, yet our critical mission is ever the same:

Every Child. Every Day.

Our entire AAPS team is committed & will continue to work hard to ensure our students are healthy & safe, cared for, connected & supported, & continue their strong learning during 2020-21

**Are students are our mission,
and we are on this mission!**



AAPS REIMAGINE LEARNING PLAN 2020-21

Perspective:

*I know that this is not what you want, and I cannot tell you
how much I wish things were different.*

*We'll do the best we can with the options we have,
but I get it if you're really unhappy about it.*

Lisa Damour, Psychologist & Adolescence columnist

My 14-Year-Old Isn't Socially Distancing. What Should I Do?

New York Times, May 22, 2020

AAPS REIMAGINE LEARNING PLAN 2020-21

- ✓ Update & Clarify Reimagine Plan
- ✓ Public Health Update
- ✓ Next Steps



AAPS REIMAGINE LEARNING PLAN 2020-21



A Foundation of Social Justice and Anti-Racism

Working to achieve equity & opportunity for all students in the AAPS,
with attention to black and brown students who have been traditionally
underserved.

In the Ann Arbor Public Schools and in the Ann Arbor community, in what ways will we hold ourselves and each other in continuing conversation to ensure direct action steps in our ongoing and focused work to move forward in ensuring a foundation of anti-racism & social justice.

At this time we are called, in the words of John Lewis,
to 'get in the way' for students

Now is a critical time and opportunity to ensure we build a
Reimagine Learning Plan 2020-21 to serve black and brown &
students from poverty well to ensure equity and opportunity.

AAPS Food Distribution Continues

415,000+ Meals Distributed since March 16th!

Summer Food Distribution

Extended through Fri, Sept 4th

2 X per week – Tuesdays & Fridays 11-12:30pm

New Late Afternoon Drive Thru Offered!

Begins Friday, 8/7 4:30-6pm Pioneer High
Tuesdays & Fridays

Enter off S. Seventh Rec & Ed Drive at PiHi

*700+ Homemade blueberry muffins
distributed yesterday*

**Thank You Chartwells, Durham &
AAPS Volunteers!**



AAPS Summer Learning, 2020 Update

Serving our Students to Remain Engaged – To Catch Up, Keep Up, Move

- Many Thanks to Summer Teachers, Leaders & Staff +350^{Up}
- Thanks to 4,500+ Students & Parents Participating (some students participating for all weeks, some are for fewer weeks)

Elementary – 900 Students each week

(Summer Adventure Games, Summer ESL Academy)

Middle – 700 students each week

(MS Summer Challenges, Summer ESL Academy, Scarlett Learning Academy)

High – 2,000+ student enrolled

(EL Bridge, Academic Youth Development AYD Math, SAT Prep, HS Summer School, A2Virtual, Support to complete spring incompletes)

Special Education – 450 students

(Extended School Year, Project READ, SISS Summer Academy Service Provision)

- AAPS Summer Programming designed using same tools in interactive online learning that we will use this fall, including Schoology



AAPS REIMAGINE LEARNING PLAN 2020-21

Week of
August 31st

Preparation and onboarding week for students & families
more specific information will be received from principal or teacher mid-August

AUGUST

Tuesday,
September 8

All students report to class
2020-21 school year begins

SEPTEMBER

ANN ARBOR PUBLIC SCHOOLS FACTS

4th



LARGEST DISTRICT IN MICHIGAN

Michigan Department of Education data

2nd



LARGEST EMPLOYER IN ANN

ARBOR

Crain's Detroit Business and Ann Arbor SPARK Data

To convene a day of in school instruction

18,500
STUDENTS



25,000+
INDIVIDUALS

Must leave their homes

CURRENT COVID CONCERNS

Rising Number of Cases during July

Washtenaw CO, Reopen MI Region, Michigan and U.S.

Emerging Research/Data

Rising % of cases among children & teens & transmission 10-19 year-olds, asymptomatic transmitters

Unknowns About COVID

short & long-term impacts, aerosol transmission

Still Unmet Needs

Readily available testing & timely results, contact tracing & sustainable supplies of PPE

CURRENT COVID REALITY

during weeks since the end of May, trend of increasing cases in Washtenaw County, Reopen Michigan Region, Michigan & U.S.

By The New York Times Updated July 22, 2020, 9:09 A.M. E.T.

[Leer en español](#)



[Other State of Michigan coronavirus resources](#)

Michigan

STATE OF MICHIGAN

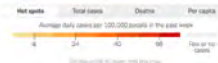
Increase in cases since May

U.S. CORONAVIRUS CASES

Highest number since beginning of pandemic with increasing death rates



TOTAL CASES
3.9 million+
DEATHS
142,031
Includes confirmed and probable cases where available



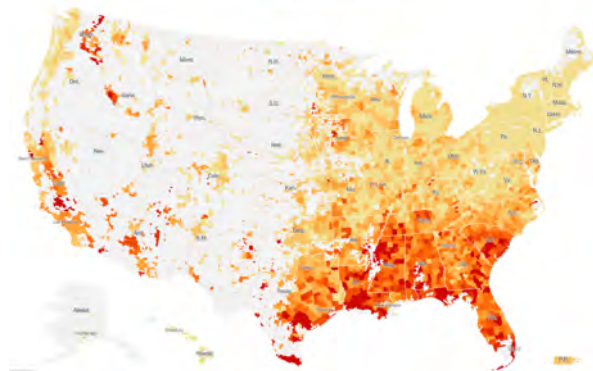
WASHTENAW COUNTY

Increase in cases since June 6th



ANN ARBOR REGION/ DETROIT AREA

Medium-High risk



ANN ARBOR AS A UNIVERSITY TOWN

- We love being the U of M **town** **GO BLUE!** – *it's what makes Ann Arbor, Ann Arbor!*

Ann Arbor rated #7 Best College Towns in the U.S. (Forbes, 2019)

- We understand that most college students will migrate to their college town during the August – September annual timeline, regardless of the virtual or in-person status of the university
- **We will closely monitor the Ann Arbor September reality of 40,000+ students potentially returning from:**
 - 82 Michigan counties, 50 states & 139 countries
 - Top-10 States Producing the most UM students last fall:
California, Illinois, New York, New Jersey, Ohio, Florida, Massachusetts, Pennsylvania, Maryland & Texas

METRICS & DECISION-MAKING TO BEGIN TRANSITION OF STUDENTS TO IN-PERSON LEARNING

- Will need to achieve very low rates of transmission over a sustained period of time – to clarify, the goal is not ‘zero’ cases
- “As for schools, they should begin instruction virtually and hold off on in-person plans until October; it will take 3-4 weeks for the new restrictions to have an effect and a few more weeks to ensure that the trend holds.”

-Lena S. Wen, Emergency Physician & former Baltimore Health Commissioner
Here's What it Could Look Like If Schools Reopened Today

<https://www.washingtonpost.com/opinions/2020/07/28/answer-these-questions-before-reopening-schools-states-where-covid-19-spreads-unchecked/>

CURRENT COVID REALITY

RECENTLY EMERGING RESEARCH & GROWING CONCERN

Summer Camps Bring Virus Warning for Back-to-School

https://www.washingtonpost.com/opinions/this-summer-camp-took-extraordinary-covid-19-precautions-it-still-failed/2020/07/14/998e172e-c22a-11ea-b178-bb7b05b94af1_story.html

Older Children Spread COVID Same as Adults

S. Korea study of 65,000 people

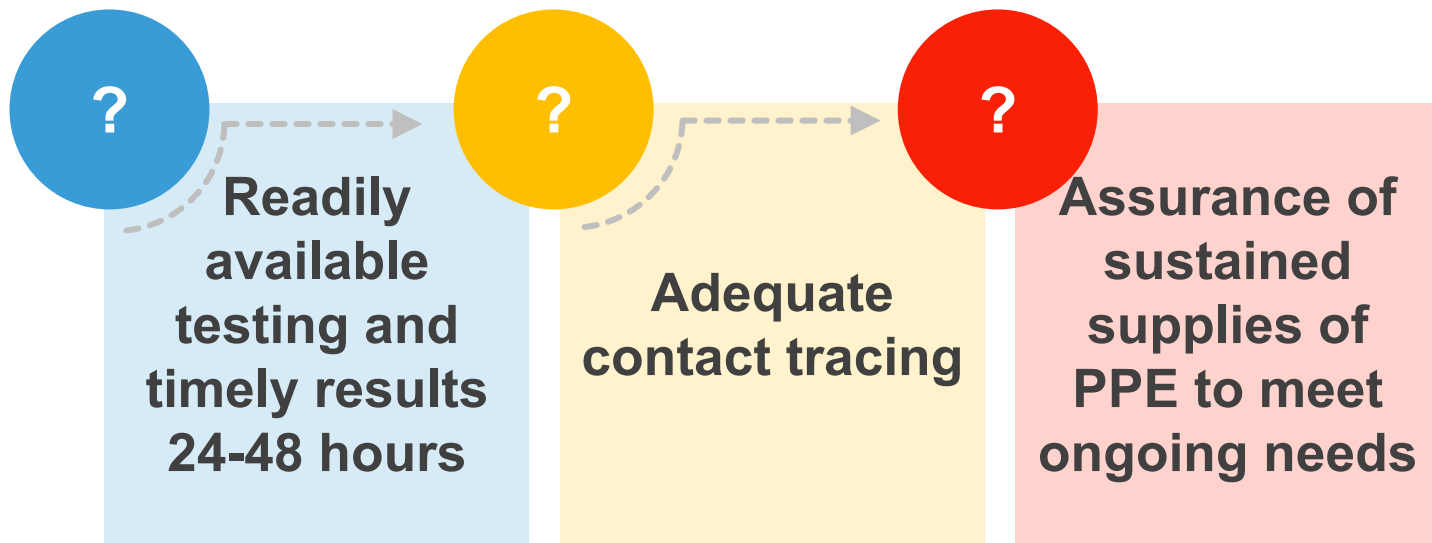
<https://www.bloomberg.com/news/articles/2020-07-19/covid-19-spread-fastest-by-teens-and-tweens-korea-study-finds>

Children and Teens Account for a rising percentage of infections in the U.S. *Washtenaw County, Michigan, & U.S. Data*

Childcare Center Outbreaks

<https://www.charlotteobserver.com/news/coronavirus/article244050757.html>

FUNDAMENTAL CONCERNS AND NEEDS FOR A CONFIDENT FULL REOPENING



CDC GUIDING PRINCIPLES FOR RETURN TO SCHOOL

The more people a student or staff member interacts with, and the longer that interaction, the higher the risk of COVID-19 spread. The risk of COVID-19 spread increases in school settings as follows:

Lowest Risk: Students and teachers engage in virtual-only classes, activities, and events.

More Risk: Small, in-person classes, activities, and events. Groups of students stay together and with the same teacher throughout/across school days and groups do not mix. Students remain at least 6 feet apart and do not share objects (e.g., hybrid virtual and in-person class structures, or staggered/rotated scheduling to accommodate smaller class sizes).

Highest Risk: Full sized, in-person classes, activities, and events. Students are not spaced apart, share classroom materials or supplies, and mix between classes and activities.

<https://www.cdc.gov/coronavirus/2019-ncov/community/schools-childcare/schools.html>

UNANSWERED QUESTIONS WITH COVID

Students have not been together with staff in school classrooms since mid-March

- *What will be the nature of transmission in a classroom/school setting*

Infection Risks

- *Short, medium & long-term impacts of contracting COVID for small children, older children, and adults*

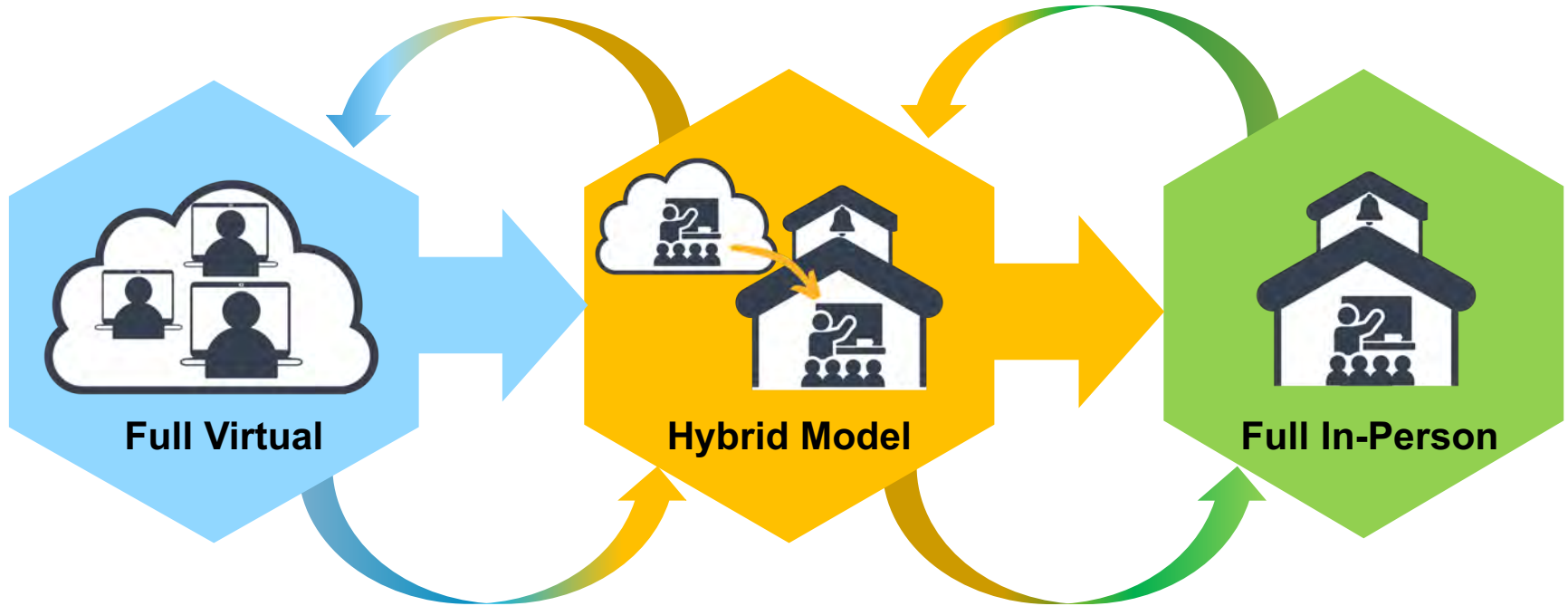
Transmission of Virus

- *Clear understanding of science of transmission via droplets from a cough, sneeze and possibility of aerosolized droplets and the distinct impact of talking, singing and participating in congregant activities together*



AAPS REIMAGINE LEARNING PLAN 2020-21

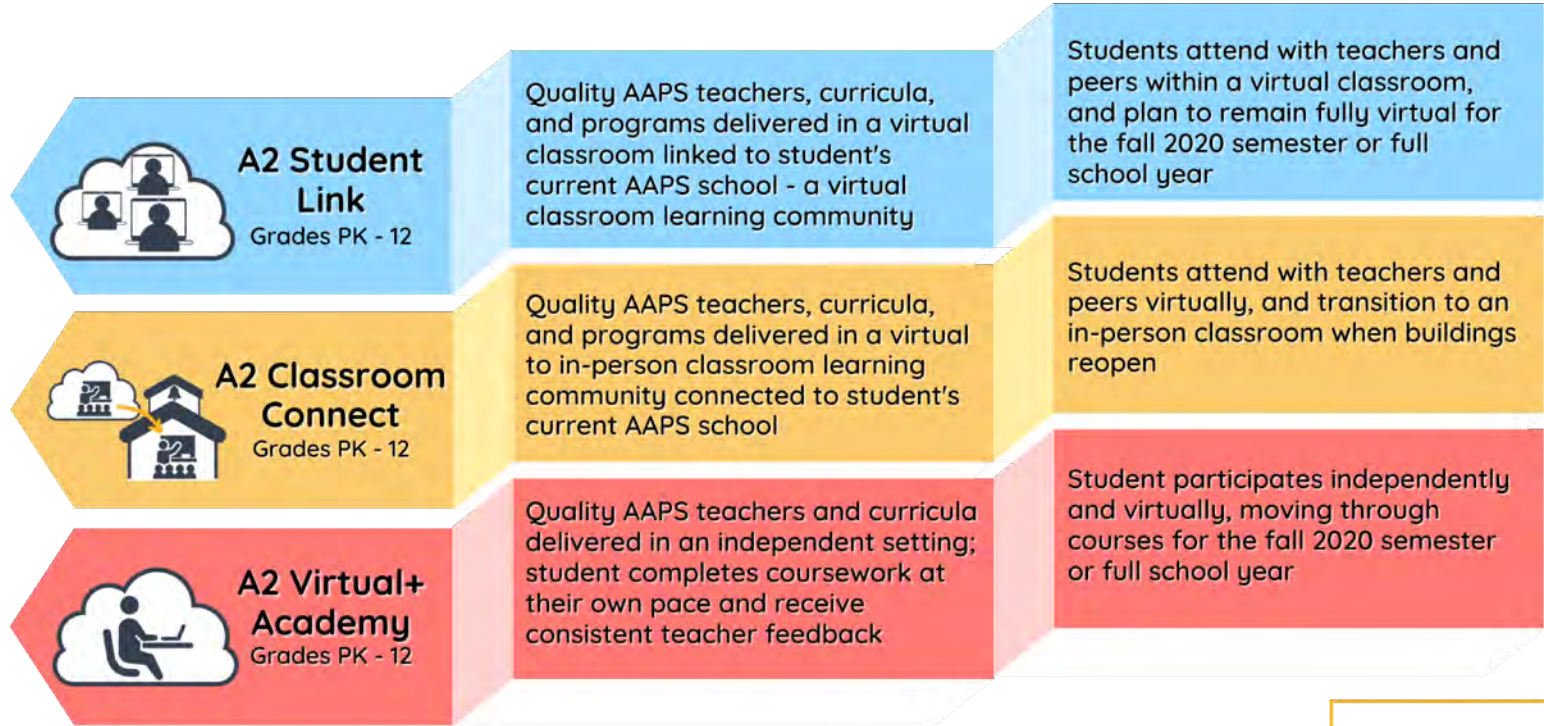
Progression to Full In-Person Classroom Learning*



* Full AAPS Virtual programming is available all year for students & families at all levels.

AAPS REIMAGINE LEARNING PLAN 2020-21

LEARNING CHOICES



AAPS REIMAGINE LEARNING PLAN 2020-21

CONNECTIONS+ LEARNING GROUPS - NETWORK

K – 12 Students

- Network of small groups of students (6-8) to ensure learning supports continue
- Safe space to access and support virtual participation
- Small groups – when in-person is allowed – in our partner locations such as community centers, apartment complex club houses, etc.
- **Connections+** groups will also meet virtually
- Social emotional & mental health supports
- All AAPS learning materials provided, staffing, & training for partners
- Use Head Start, Title I, ESL, Homeless & parent, social worker, & teacher referral
- Also informed by participation data from Schoology

AAPS REIMAGINE LEARNING PLAN 2020-21

SPECIALIZED SUPPORTS FOR STUDENTS WITH SPECIAL NEEDS

- **Learning through synchronous, online instruction**
Including service provision to support IEP w/ Teacher Consultants & other Special Education professionals consistently working w/ students
- **Specialized Services provided to meet IEP**
- **Additional supports on Wednesdays**
Including service provision and paraprofessional support
- **Instruction driven by Universal Design for Learning (UDL) framework**
- **Social Emotional Learning (SEL)**
- **Students with greatest need will be considered for *Connections+* group supports**



AAPS REIMAGINE LEARNING PLAN 2020-21

SUPPORT FOR YOUNGEST STUDENTS

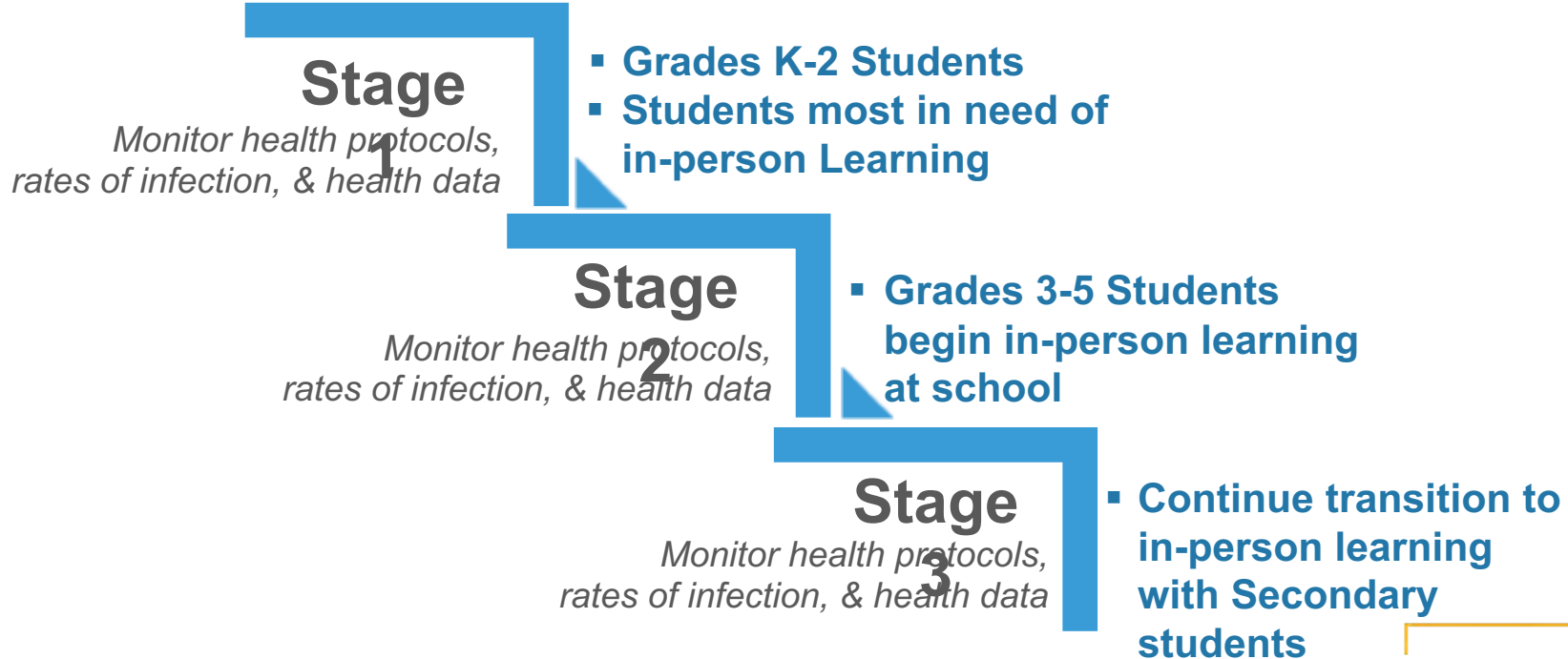
- **Learning through synchronous, online instruction will be paced to age-appropriate expectations**
Including service provision to support IEP
- **Learning materials provided in-home (journals, art supplies, reading materials, etc.)**
- **Youngest students begin the transition to in-person learning first**
- **Social Emotional Learning (SEL) activities & connections daily**



AAPS REIMAGINE LEARNING PLAN 2020-21

SUPPORT FOR YOUNGEST STUDENTS

~ Preview of One Potential Transition Plan ~



AAPS REIMAGINE LEARNING PLAN 2020-21

ACCELERATED LEARNING

Students may choose from wide spectrum of options:

- AAPS accelerated classes: advanced placement, university dual enrollment, and community resource classes/opportunities
- International Baccalaureate Programme
- World Language, and other opportunities
- Partnership with Washtenaw Community College



AAPS REIMAGINE LEARNING PLAN 2020-21

FULL QUALITY PROGRAM OFFERINGS CONTINUE

Music, Visual & Performing Arts, *Project Lead the Way*, World Languages

- Continue to provide the high quality arts instruction in the AAPS that our community expects and enjoys virtually, through teacher modeling and providing group & individual feedback
- Students are creating, producing and responding to art, music, and theater asynchronously and synchronously
- Arts teachers are able to virtually meet with and rehearse groups in the performing arts, provide continuing guidance and feedback for visual arts
- Student product, production or presentation can be viewed virtually as well as use of app/software where musicians can rehearse and record music in real time, create a final product, and upload to Schoology

AAPS REIMAGINE LEARNING PLAN 2020-21

SAMPLE WEEKLY LEARNING SCHEDULE

- Real-time classroom instruction 4 days per week:
 - ✓ Mon-Tues & Thur-Fri
- Wednesday dedicated AAPS Exploration Learning Day
- Wednesday & Saturday – full menu of recreational opportunities for families



AAPS REIMAGINE LEARNING PLAN 2020-21

HIGHLIGHTS OF INPUT & FEEDBACK FOR ADJUSTMENTS

- Modified learning day at elementary & middle
- Align daily schedules to support families with multi-level students
- Less synchronous learning time and/or less spread out across the day
- Synchronous learning times only in the morning at elementary and perhaps asynchronous or choice activities in the afternoon
- Independent learning opportunity at elementary and at middle

AAPS REIMAGINE LEARNING PLAN 2020-21

NEXT STEPS



August 12

**SELECT LEARNING CHOICE
FOR FALL**



**SCHOOL AND
COMMUNITY INPUT
AND FEEDBACK**



**CONTINUE
PERSONAL
RESPONSIBILITY**

AAPS REIMAGINE LEARNING PLAN 2020-21

NEXT STEPS For ALL



**CONTINUE Our
PERSONAL & COLLECTIVE
RESPONSIBILITY**

- **Wear a mask**
- **Watch your distance – 6 feet**
- **Wash your hands**



ANN ARBOR PUBLIC SCHOOLS

REIMAGINE

LEAD. CARE. INSPIRE.



AAPS REIMAGINE LEARNING PLAN

2020-21